

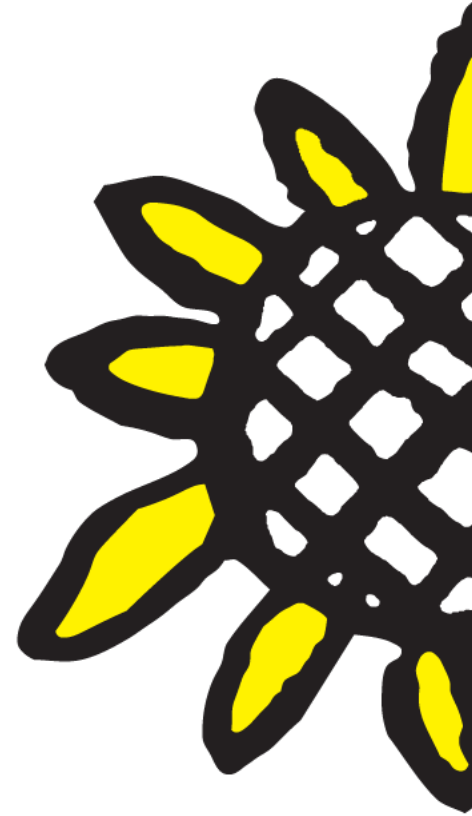


# BLUE VALLEY DIVERSITY, EQUITY, AND INCLUSION BOARD ADVISORY COMMITTEE

THURSDAY, OCTOBER 6

MISSION OF THE  
FOUNDATION

**OUR MISSION IS  
TO ENRICH  
EDUCATIONAL  
EXCELLENCE.**



# HISTORY AND PURPOSE OF THE FOUNDATION

- Founded in 1992
- Partner across all parts of the community to ensure teachers and students have the tools they need to be successful
- Manage philanthropic funds to ensure gifts are used wisely and distributed throughout the district
- Provide funding for extraordinary educational programs



THE FOUNDATION  
HAS PROVIDED...

**\$7.7M+**

**BACK TO  
THE DISTRICT**

---

# LEADERSHIP & STAKEHOLDERS: COMMUNITY ENGAGEMENT

- BVEF Board of Directors
- BVEF Event Volunteers
- BVEF Staff



Susan



Lisa



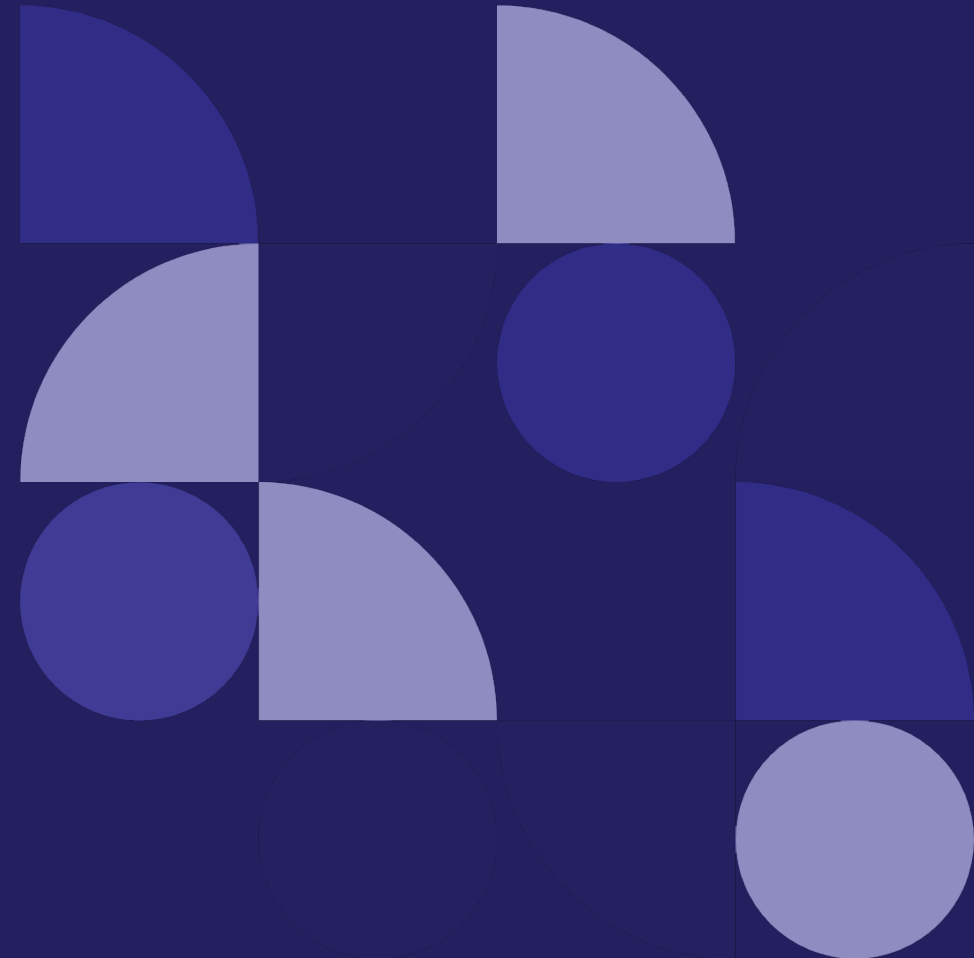
Cindy



---

## ABOUT OUR FOUNDATION:

- EMPOWERING TEACHERS
- ENABLING STUDENTS TO LEAD, INNOVATE,  
AND LEARN FOR THEIR FUTURES
- SUPPORT EDUCATORS AND STAFF TO MAXIMIZE  
OUTCOMES FOR EVERY CHILD IN THE DISTRICT



## WHO WE SERVE

- Students
- Teachers
- District
- Community





---

## THE ROLE OF SCHOOL FOUNDATIONS IN THE HEALTH OF COMMUNITIES

- It's a positive PR tool.
- It engages communities with school systems.
- It builds a new audience of ambassadors.
- It builds bridges with interested constituencies.
- It establishes new vehicles for raising private funding support.
- It gives a new means for having citizens' voices heard.



---

## HOW WE RAISE MONEY: SIGNATURE EVENTS



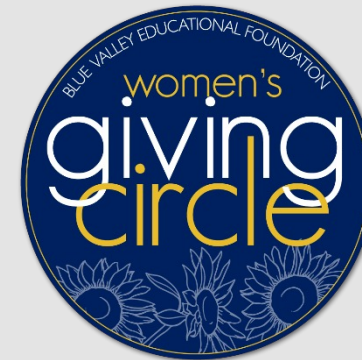
Community Breakfast



Night of Lights



Battle of the Bands

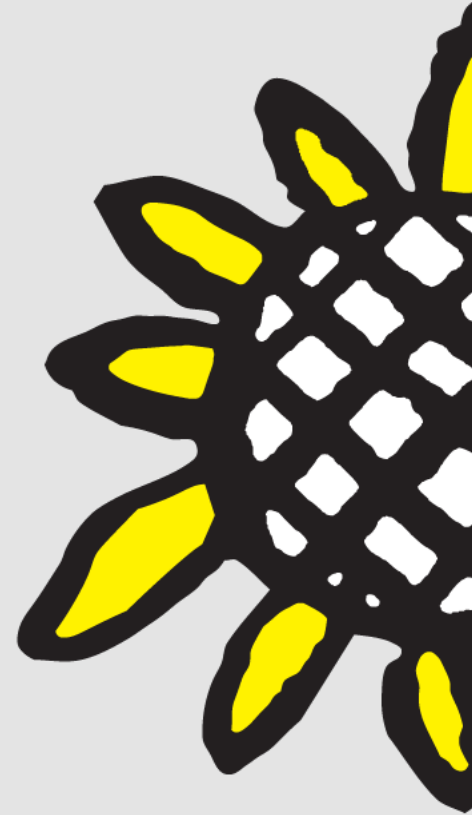


Women's Giving Circle

---

# HOW WE RAISE MONEY: FUNDRAISING INITIATIVES

- Major Saver Campaign
- Partners in Education
- Payroll Campaign
- School Registration and Parent Membership
- Raffle for a Reason
- Individual Gifts
- Capital Gifts



---

# HOW WE RAISE MONEY: OUR CONTRIBUTORS

- BV District staff
- Families, households and alumni
- Corporations
- Foundations
- Local businesses
- Other stakeholders





---

## HOW WE GIVE IT AWAY: OUR SUPPORT OF THE DISTRICT

- Teacher Grants
- Building Grants
- District-wide Grants or Initiatives
- Women's Giving Circle Grants
- Capital Projects
  - New Teacher Welcome Grants
  - Food Pantry
  - Career Tech Ed Partnership with JCCC
  - Wilderness science Center and Wellness Walk
- Student College Scholarships
- Innovative Educator of the Year, Dr. David Benson Teacher of the Year, and Master Teacher of the Year Awards

# SURPRISE SQUAD

- [Surprise Squad Video](#)

# FOUNDATION PROGRAMS

- Sunflower Ambassadors: Character Education
- BV Well
- Sources of Strength
- #GiveME20
- Wilderness Science Center



---

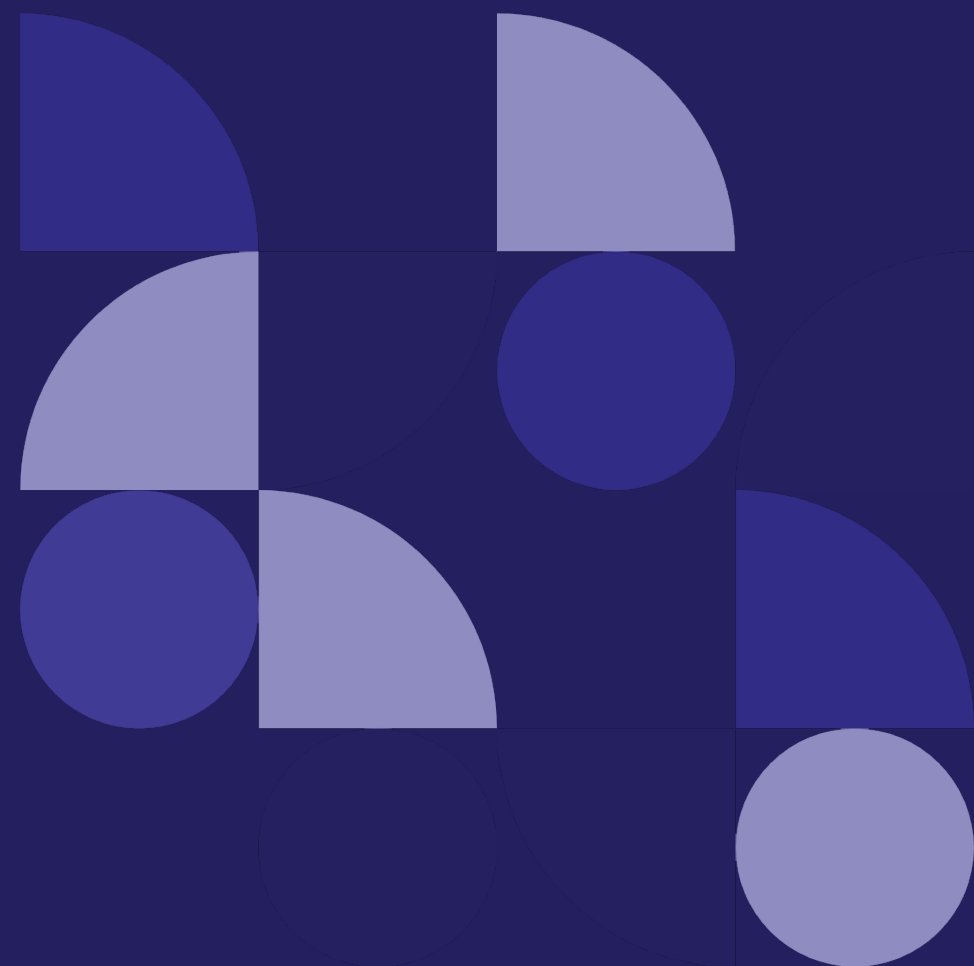
IN TODAY'S ENVIRONMENT, THERE ARE LIMITED RESOURCES. THE STATE IS SAYING WE WANT TO PROVIDE AN ADEQUATE EDUCATION. ADEQUATE IS THE BASELINE AND I THINK WE WANT SOMETHING BETTER THAN THAT.

*BOB REGNIER,  
VICE CHAIRMAN OF THE BOARD  
BANK OF BLUE VALLEY*



---

QUESTIONS &  
THANK YOU







FUNDBV.ORG

15020 METCALF AVE.

OVERLAND PARK, KS 66223

913-239-4622

SATIDEMAN@BLUEVALLEYK12.ORG

